



高霖通訊科技有限公司
Go-Link Technology Co., Ltd.

產品規格/承認書
PRODUCT SPECIFICATION / APPROVAL SHEET

產品 5.8GHz 無線影像接收模組 (航模空拍機用)
Product : 5.8GHz 1 Video RX Module

型號
Model No. : MA58R0010L

客戶
Customer :

客戶型號
Customer Model No. :

		本承認書內容若貴公司確認無誤， 請於下方承認欄內簽章。 Please confirm your acceptance of this approval sheet by authorized signatures.	
		承認欄 Approved Signature	
版本 (Version)	V1.1		
日期 (Date)	2017/10/03		

CONTENTS

1. General	3
2. Environmental Specification	3
3. Electrical Characteristics	3
4. Pin Assignment	4
5. Channel Selection	6
6. Mechanical Specification	7
7. Application CKT	8

1. General

No.	Items	Description
1	Operation Frequency Range	IN Band : 5733 MHz ~ 5866 MHz OUT Band : 5645 MHz ~ 5705 MHz 5885 MHz ~ 5945 MHz
2	Channel Selection (8 CH)	Select by DIP Switch (CH SW 1 ~ 3) See Table 1
3	Video Modulation	FM
4	RF Antenna Port Impedance	50 Ω

2. Environmental Specification

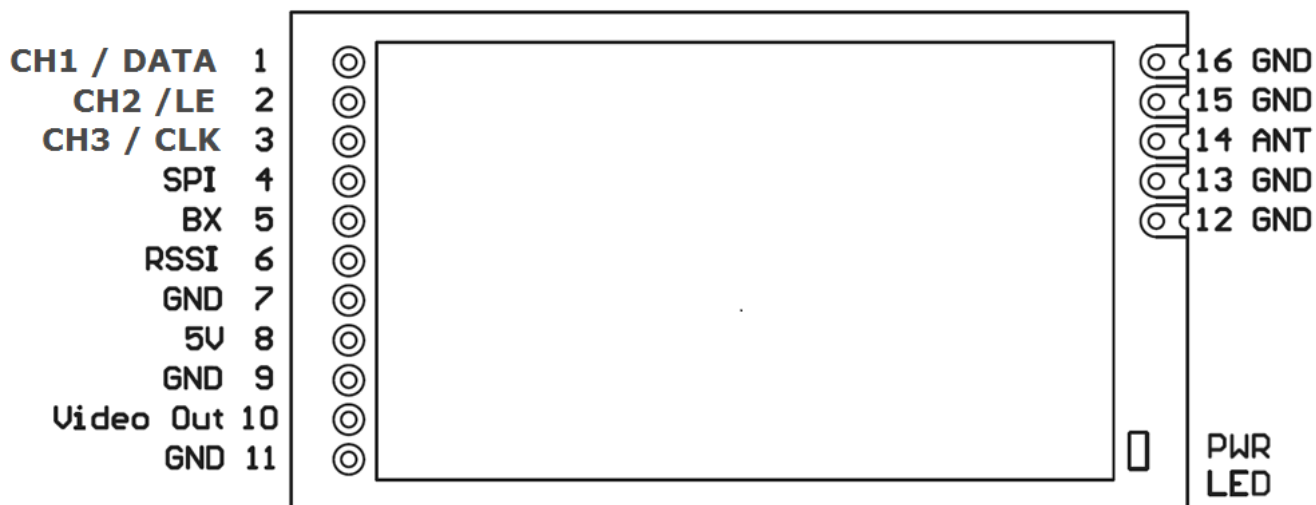
No.	Items	Min.	Typ.	Max.	Unit.
1	Operating Temperature	-10	-	+60	°C
2	Storage Temperature	-20	-	+70	°C

3. Electrical Characteristics

Testing Condition @ 25°C

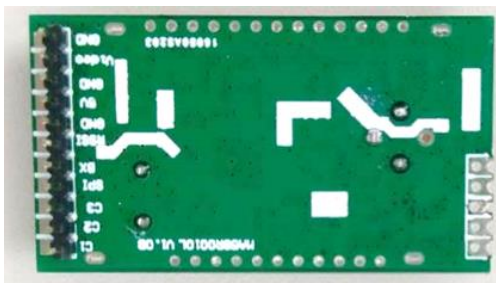
No.	Items	Min.	Typ.	Max.	Unit.	Condition
1	Supply Voltage	4.0	5.0	5.25	V	
2	Current Consumption	160	175	190	mA	
3	Input Level	-85		-10	dBm	
4	Sensitivity		-80		dBm	
5	Video Output Level	0.9	1	1.3	Vp-p	Modulation signal. 75 % color Bar 75 Ω load
6	Video S/N Ratio	40			dB	
7	RSSI output voltage	0.25	-	1.15	V	

4. Pin Assignment



Pin No.	Name	I / O	Function Description
1	CH1 / DATA	I	Channel setting 1 or SPI data input
2	CH2 / LE	I	Channel setting 2 or SPI data enable input
3	CH3 / CLK	I	Channel setting 3 or SPI clock input
4	SPI	I	SPI Mode Setting Hi (open) : SPI Mode Low (short to GND) : DIP Switch Mode
5	BX	I	IN BAND / OUT BAND Setting (See Table 1)
6	RSSI	O	Received Signal Strength Indicator RSSI voltage range : 0.2V ~ 1.2V (RF Signal ↑ → RSSI voltage ↑)
7	GND	-	Ground
8	5V	I	DC power input (4 ~ 5V)
9	GND	-	Ground
10	Video OUT	O	Video Output
11	GND	-	Ground
12	GND	-	Ground (No pin header)
13	GND	-	Ground (No pin header)

14	ANT	I	RF Input (No pin header)
15	GND	-	Ground (No pin header)
16	GND	-	Ground (No pin header)



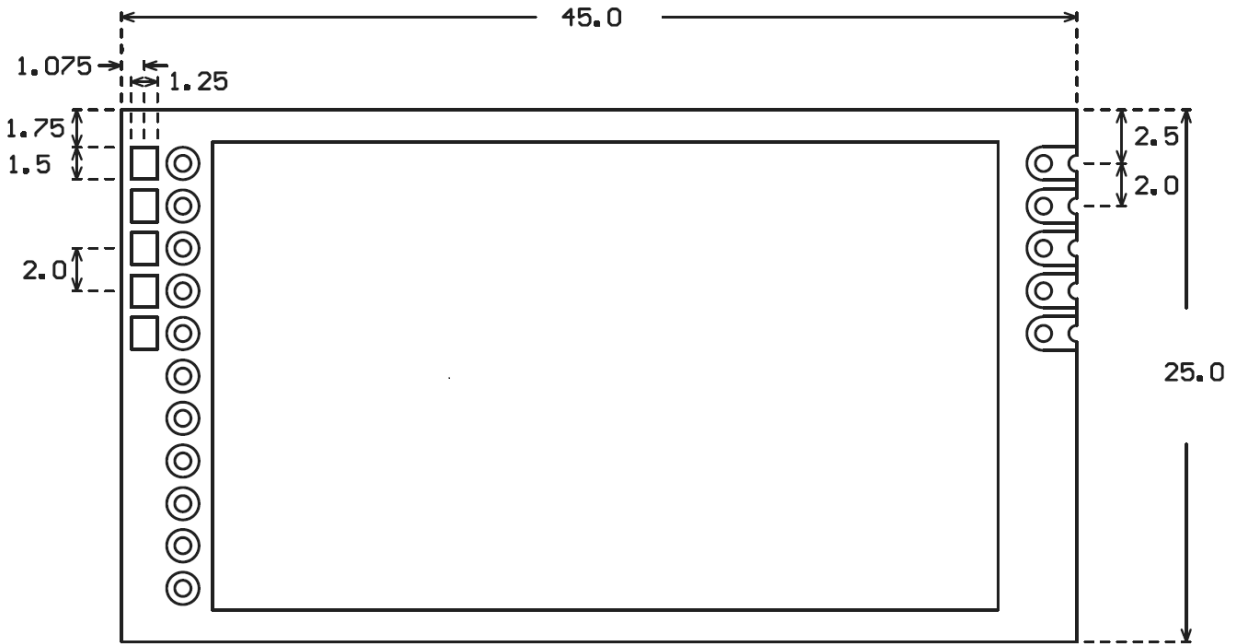
5. Channel Selection

Table 1 : Frequency Table

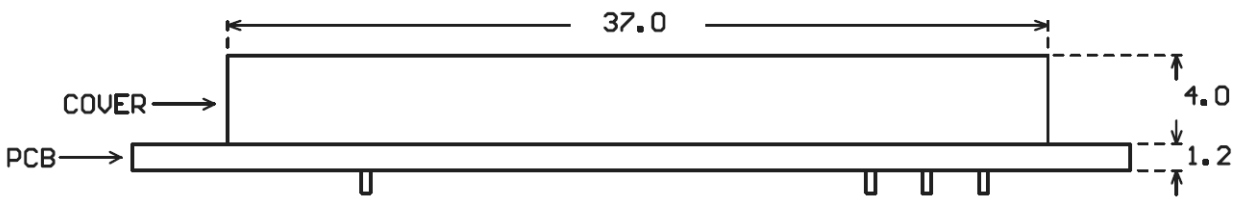
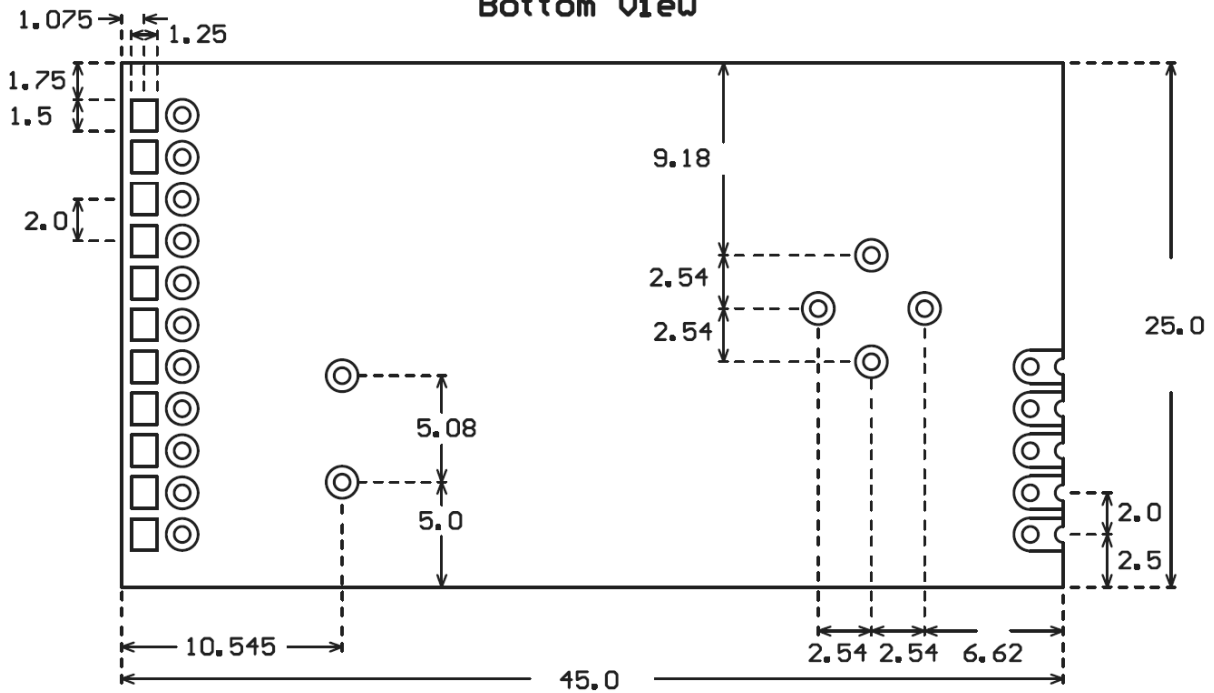
Channel setting				IN Band (MHz)	OUT Band (MHz)
Channel NO.	CH 1 (Pin 1)	CH 2 (Pin 2)	CH 3 (Pin 3)	BX = GND (Pin 5)	BX = Open (Pin 5)
CH1	GND	GND	GND	5733	5705
CH2	OPEN	GND	GND	5752	5685
CH3	GND	OPEN	GND	5771	5665
CH4	OPEN	OPEN	GND	5790	5645
CH5	GND	GND	OPEN	5809	5885
CH6	OPEN	GND	OPEN	5828	5905
CH7	GND	OPEN	OPEN	5847	5925
CH8	OPEN	OPEN	OPEN	5866	5945

6. Mechanical Specification

Top View



Bottom View



Unit : mm

7. Application CKT

